

ZON™

BEARINGS FOR YOUR FUTURE



K滚针保持器架组件



TÜVRheinland®
CERT
Certified ISO 2008
Certified
Management System
according to ISO 9001:2008



BEARINGS FOR YOUR FUTURE

灿恩球轴承在标准和非标应用中最佳品质的产品。

灿恩除了经营一千余种微型轴承（内径1-10mm,包括英制）之外还提供薄壁、推力、标准公制轴承以及其他各种非标轴承。我们能够按照客户的特殊需求，通过一些新型材料例如陶瓷或者特殊钢材来设计轴承以满足工业，医疗，化学或食品加工行业上的各种应用。

无论数量多少，我们的技术部门都能根据客户要求定制各种非标轴承。

如果您在我们的产品目录册中无法找到您的理想型号，请联系我们经验丰富的销售团队。



灿恩已获得德国ISO 9001 TUV莱茵认证。

该技术认证被认为是轴承行业的最高检验标准。该认证受国际认可，被视为质量的保证，客户的首选以及品质服务的持续进步。

www.zen.biz



K滚针保持器架组件



润滑油

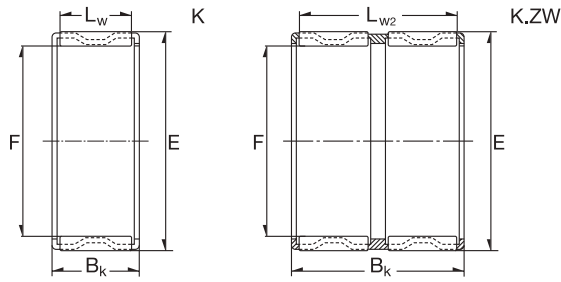


高速运转适用



超负荷适用

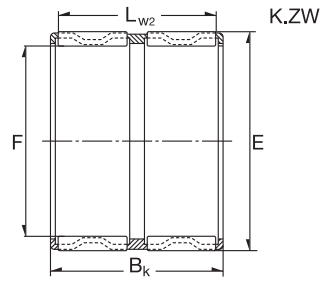
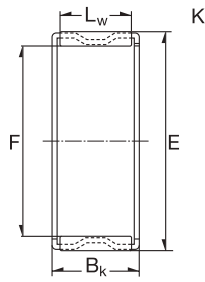
K滚针保持器架组件



3

Dimension (mm)			Designation/Type	*Basic Load Rating		*Limiting Speed x1000rpm Oil	Mass (g) approx.
F	E	BK		C	Co		
5.0	8.0	8.0	K5-8-8 TN	2300	1880	37.0	>1 g
5.0	8.0	10.0	K5-8-10 TN	2800	2450	37.0	>1 g
6.0	9.0	8.0	K6-9-8 TN	2560	2240	35.0	>1 g
6.0	9.0	10.0	K6-9-10 TN	3300	3100	35.0	1.0 g
6.0	10.0	13.0	K6-9-13 TN	3500	2800	33.0	>1 g
7.0	10.0	8.0	K7-10-8 TN	2750	2550	32.0	1 g
7.0	10.0	10.0	K7-10-10 TN	3350	3400	32.0	1 g
8.0	11.0	8.0	K8-11-8 TN	3000	2900	30.0	1 g
8.0	11.0	10.0	K8-11-10 TN	3830	3950	30.0	1 g
8.0	11.0	13.0	K8-11-13 TN	5000	5700	30.0	1 g
8.0	12.0	10.0	K8-12-10 TN	4900	4600	30.0	1 g
9.0	12.0	10.0	K9-12-10 TN	4200	4700	30.0	1g
9.0	12.0	13.0	K9-12-13 TN	5500	6700	30.0	1g
10.0	13.0	10.0	K10-13-10 TN	4500	5250	27.0	1g
10.0	13.0	13.0	K10-13-13 TN	6000	7600	27.0	2g
10.0	13.0	16.0	K10-13-16 TN	6300	7800	27.0	2g
10.0	14.0	10.0	K10-14-10 TN	7000	7900	26.0	2 g
10.0	14.0	13.0	K10-14-13 TN	8000	9100	27.0	4 g
10.0	16.0	12.0	K10-16-12 TN	7000	9300	27.0	3 g
12.0	15.0	9.0	K12-15-9 TN	4120	5210	25.0	2 g
12.0	15.0	10.0	K12-15-10 TN	4320	5730	25.0	1 g
12.0	15.0	13.0	K12-15-13 TN	6000	8100	25.0	2 g
12.0	16.0	8.0	K12-16-8 TN	4200	4700	25.0	2 g
12.0	16.0	10.0	K12-16-10 TN	6000	6900	25.0	3 g
12.0	16.0	13.0	K12-16-13 TN	7900	9200	25.0	3 g
12.0	17.0	13.0	K12-17-13 TN	9300	10000	24.0	4 g
12.0	18.0	12.0	K12-18-12 TN	9800	8000	24.0	5 g
12.0	15.0	20.0	K12-15-20 TN	8200	12000	25.0	3 g
14.0	17.0	10.0	K14-17-10	5100	6800	23.0	4 g
14.0	17.0	17.0	K14-17-17	9300	14000	23.0	6 g

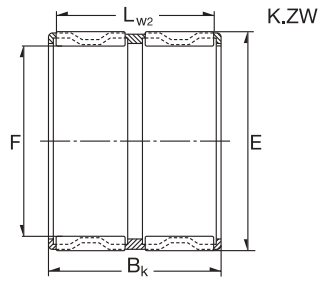
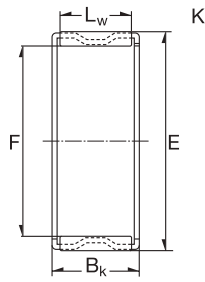
K滚针保持器架组件



4

Dimension (mm)			Designation/Type	*Basic Load Rating		*LimitingSpeed x1000rpm Oil	Mass (g) approx.
F	E	BK		C	Co		
14.0	18.0	10.0	K14-18-10	6800	8300	23.0	4 g
14.0	18.0	13.0	K14-18-13	8100	9800	23.0	6 g
14.0	18.0	14.0	K14-18-14	9200	12000	23.0	5 g
14.0	18.0	15.0	K14-18-15	10000	13000	23.0	7 g
14.0	18.0	17.0	K14-18-17	10500	13900	23.0	-
14.0	20.0	12.0	K14-20-12	9900	10500	22.0	18 g
15.0	18.0	14.0	K15-18-14	7500	11000	23.0	5 g
15.0	18.0	17.0	K15-18-17	9600	15900	23.0	5 g
15.0	19.0	10.0	K15-19-10	7200	9000	23.0	5 g
15.0	19.0	13.0	K15-19-13	8300	9800	22.0	7 g
15.0	19.0	17.0	K15-19-17	10300	15000	22.0	8 g
15.0	19.0	24.0	K15-19-24	12800	20100	22.0	10 g
15.0	20.0	13.0	K15-20-13	9700	11000	22.0	8 g
15.0	21.0	12.0	K15-21-12	10000	13000	22.0	10 g
15.0	21.0	15.0	K15-21-15	13800	16000	22.0	13 g
15.0	21.0	21.0	K15-21-21	18000	24000	22.0	18 g
16.0	20.0	10.0	K16-20-10	7600	9700	22.0	5 g
16.0	20.0	13.0	K16-20-13	8700	11300	22.0	7 g
16.0	20.0	17.0	K16-20-17	11200	16300	22.0	9 g
16.0	21.0	10.0	K16-21-10	9000	12000	22.0	6 g
16.0	22.0	12.0	K16-22-12	11000	12000	21.0	10 g
16.0	22.0	13.0	K16-22-13	12000	13400	21.0	11 g
16.0	22.0	16.0	K16-22-16	14300	17000	21.0	13 g
16.0	22.0	20.0	K16-22-20	18000	22300	21.0	16 g
16.0	23.0	14.0	K16-23-14	19000	21000	19.0	20 g
16.0	24.0	20.0	K16-24-20	21100	23000	20.0	24 g
17.0	21.0	10.0	K17-21-10	7900	10100	21.0	5 g
17.0	21.0	13.0	K17-21-13	10000	14100	21.0	7 g
17.0	21.0	17.0	K17-21-17	12000	17400	21.0	9 g
17.0	23.0	14.0	K17-23-14	11000	15000	21.0	11 g

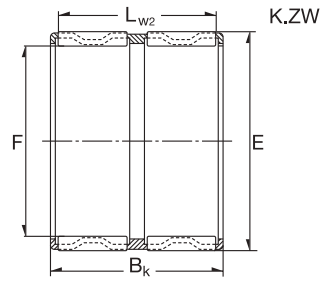
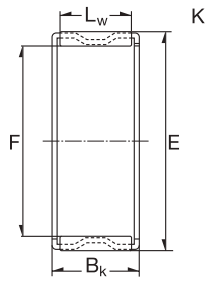
K滚针保持器架组件



5

Dimension (mm)			Designation/Type	*Basic Load Rating		*Limiting Speed x1000rpm Oil	Mass (g) approx.
F	E	BK		C	Co		
18.0	22.0	10.0	K18-22-10	8200	9900	20.0	6 g
18.0	22.0	13.0	K18-22-13	9000	12100	20.0	7 g
18.0	22.0	17.0	K18-22-17	11900	17600	20.0	10 g
18.0	24.0	12.0	K18-24-12	11200	12900	20.0	11 g
18.0	24.0	13.0	K18-24-13	12900	14900	20.0	12 g
18.0	24.0	13.5	K18-24-13.5	12900	14900	20.0	13 g
18.0	24.0	20.0	K18-24-20	20000	26500	20.0	19 g
18.0	25.0	14.0	K18-25-14	16500	18800	20.0	14 g
18.0	25.0	22.0	K18-25-22	22900	28400	20.0	24 g
18.0	26.0	14.0	K18-26-14	18000	20000	18.0	19 g
18.0	28.0	16.0	K18-28-16	19000	18400	19.0	24 g
19.0	23.0	13.0	K19-23-13	9300	13000	20.0	8 g
19.0	23.0	17.0	K19-23-17	12000	18600	20.0	11 g
20.0	24.0	10.0	K20-24-10	8700	12100	19.0	6 g
20.0	24.0	12.0	K20-24-12	9600	13800	19.0	8 g
20.0	24.0	13.0	K20-24-13	9600	13800	19.0	8 g
20.0	24.0	17.0	K20-24-17	12400	20000	19.0	11 g
20.0	26.0	12.0	K20-26-12	13100	15700	19.0	13 g
20.0	26.0	16.0	K20-26-16	18000	25000	18.5	17 g
20.0	26.0	17.0	K20-26-17	18700	25500	19.0	18 g
20.0	26.0	20.0	K20-26-20	20600	28500	18.0	22 g
20.0	28.0	20.0	K20-28-20	23400	28000	18.0	26 g
20.0	28.0	25.0	K20-28-25	30000	28500	18.0	36 g
20.0	30.0	30.0	K20-30-30	35000	41000	19.0	56 g
21.0	25.0	13.0	K21-25-13	9600	14500	19.0	9 g
21.0	25.0	17.0	K21-25-17	12800	21000	18.0	12 g
22.0	26.0	10.0	K22-26-10	8700	12900	18.0	7 g
22.0	26.0	13.0	K22-26-13	10000	15400	18.0	9 g
22.0	26.0	17.0	K22-26-17	13100	22100	18.0	12 g
22.0	27.0	13.0	K22-27-13	14000	23000	18.0	10 g

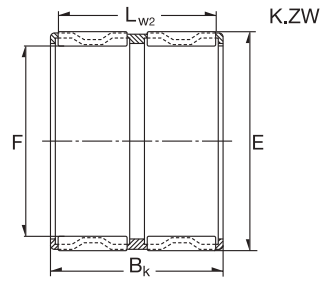
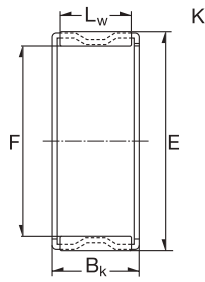
K滚针保持器架组件



6

Dimension (mm)			Designation/Type	*Basic Load Rating		*LimitingSpeed x1000rpm Oil	Mass (g) approx.
F	E	BK		C	Co		
22.0	28.0	17.0	K22-28-17	19000	26500	19.0	19 g
22.0	28.0	23.0	K22-28-23	20000	27000	17.0	26 g
22.0	29.0	16.0	K22-29-16	19500	25000	17.0	22 g
22.0	30.0	15.0	K22-30-15 TN	19600	22900	18.9	14 g
22.0	30.0	20.0	K22-30-20	21000	23500	18.9	28 g
23.0	32.0	24.0	K22-32-24	33500	39500	16.0	43 g
24.0	35.0	16.0	K23-35-16 TN	24000	23400	15.0	30 g
24.0	28.0	10.0	K24-28-10	9400	14300	17.0	8 g
24.0	28.0	13.0	K24-28-13	10500	17000	17.0	10 g
24.0	28.0	17.0	K24-28-17	14000	24500	17.0	13 g
24.0	29.0	13.0	K24-29-13	13100	19100	16.0	13 g
24.0	30.0	17.0	K24-30-17	19000	27000	16.0	21 g
24.0	30.0	31.0	K24-30-31	27000	43000	16.0	39 g
25.0	29.0	10.0	K25-29-10	9700	14900	16.0	8 g
25.0	29.0	13.0	K25-29-13	10800	17900	16.0	10 g
25.0	29.0	17.0	K25-29-17	14500	25500	16.0	13 g
25.0	30.0	13.0	K25-30-13	14100	21300	16.0	12 g
25.0	30.0	20.0	K25-30-20	21100	28000	16.0	20 g
25.0	30.0	25.0	K25-30-25	21700	40400	15.0	21 g
25.0	30.0	26.0	K25-30-26	20100	26500	15.0	21 g
25.0	31.0	17.0	K25-31-17	19000	28000	16.0	21 g
25.0	31.0	21.0	K25-31-21	24100	37500	16.0	26 g
25.0	32.0	16.0	K25-32-16	20500	27500	15.0	24 g
25.0	33.0	20.0	K25-33-20	28000	37500	15.0	32 g
25.0	33.0	24.0	K25-33-24	33900	46500	15.0	38 g
25.0	34.0	18.0	K25-34-18	48000	67000	15.0	32 g
25.0	35.0	30.0	K25-35-30	46500	61500	14.0	65 g
25.0	30.0	26.0	K25-30-26	21000	35000	14.0	27 g
26.0	30.0	10.0	K26-30-10	9500	15500	16.0	9 g
26.0	30.0	13.0	K26-30-13	11100	18700	16.0	11 g

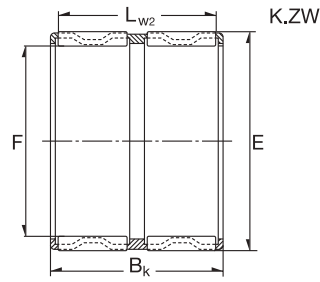
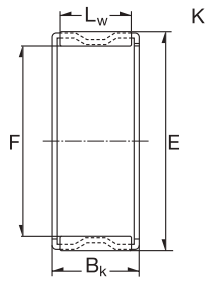
K滚针保持器架组件



7

Dimension (mm)			Designation/Type	*Basic Load Rating		*LimitingSpeed x1000rpm Oil	Mass (g) approx.
F	E	BK		C	Co		
26.0	30.0	17.0	K26-30-17	14700	27000	16.0	15 g
26.0	31.0	13.0	K26-31-13	12400	18400	15.0	9 g
26.0	30.0	22.0	K26-30-22	15200	28000	16.0	12 g
27.0	32.0	17.0	K27-32-17	16000	34000	17.0	29 g
28.0	32.0	16.5	K28-32-16.5	15000	32400	14.0	18 g
28.0	32.0	17.0	K28-32-17	15000	32400	14.0	18 g
28.0	33.0	13.0	K28-33-13	14800	23600	14.0	15 g
28.0	33.0	17.0	K28-33-17	19100	33000	14.0	19 g
28.0	33.0	27.0	K28-33-27 TN	22800	40500	14.0	19 g
28.0	34.0	17.0	K28-34-17	21300	35000	14.0	24 g
28.0	35.0	16.0	K28-35-16	21000	29000	14.0	29 g
28.0	35.0	18.0	K28-35-18	23500	33500	14.0	31 g
28.0	35.0	20.0	K28-35-20	24000	34000	14.0	35 g
28.0	35.0	27.0	K28-35-27	34500	54500	14.0	47 g
28.0	36.0	16.0	K28-36-16	34000	47000	11.0	40 g
28.0	40.0	18.0	K28-40-18	33000	36500	12.0	50 g
28.0	40.0	25.0	K28-40-25	45000	54500	12.0	71 g
30.0	34.0	13.0	K30-34-13	11800	21200	13.0	14 g
30.0	35.0	13.0	K30-35-13	11500	25000	13.0	16 g
30.0	35.0	17.0	K30-35-17	19100	33500	13.0	21 g
30.0	35.0	27.0	K30-35-27	30000	58500	13.0	33 g
30.0	37.0	16.0	K30-37-16	22500	33000	13.0	26 g
30.0	38.0	25.0	K30-38-25	16000	39000	13.0	43 g
30.0	40.0	18.0	K30-40-18	31500	39500	12.0	44 g
30.0	40.0	30.0	K30-40-30	48500	68500	13.0	78 g
30.0	35.0	26.0	K30-35-26	23500	43500	12.0	32 g
32.0	37.0	13.0	K32-37-13	15000	25000	12.0	18 g
32.0	37.0	17.0	K32-37-17	19400	35000	12.0	22 g
32.0	37.0	27.0	K32-37-27	29500	59500	12.0	36 g
32.0	37.0	28.0	K32-37-28 TN	23100	43000	12.0	22 g

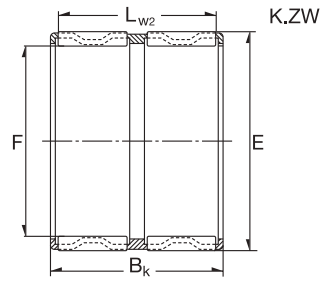
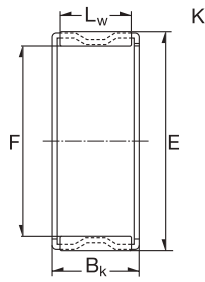
K滚针保持器架组件



8

Dimension (mm)			Designation/Type	*Basic Load Rating		*LimitingSpeed x1000rpm Oil	Mass (g) approx.
F	E	BK		C	Co		
32.0	38.0	16.0	K32-38-16	21000	34000	12.0	25 g
32.0	38.0	20.0	K32-38-20	26000	44500	12.0	31 g
32.0	38.0	26.0	K32-38-26 TN	27000	46500	12.0	25 g
32.0	39.0	16.0	K32-39-16	23500	35000	12.0	36 g
32.0	39.0	18.0	K32-39-18	26000	40500	12.0	37 g
32.0	40.0	20.0	K32-40-20	37000	40500	12.0	48 g
32.0	40.0	36.0	K32-40-36	53500	91500	12.0	73 g
32.0	46.0	32.0	K32-46-32	65500	82500	11.0	119 g
32.0	40.0	42.0	K32-40-42 TN	49500	83500	12.0	77 g
35.0	40.0	13.0	K35-40-13	15800	27500	11.0	18 g
35.0	40.0	17.0	K35-40-17	20300	38000	11.0	25 g
35.0	40.0	25.0	K35-40-25	29000	59500	11.0	31 g
35.0	40.0	27.0	K35-40-27 TN	24500	48000	11.0	23 g
35.0	40.0	27.0	K35-40-27	27800	62100	11.0	28 g
35.0	40.0	30.0	K35-40-30	25000	49500	11.0	43 g
35.0	42.0	16.0	K35-42-16	23900	37000	11.0	34 g
35.0	42.0	18.0	K35-42-18	27000	42500	11.0	39 g
35.0	42.0	30.0	K35-42-30	38500	67500	11.0	62 g
35.0	43.0	18.0	K35-43-18	28000	41500	11.0	38 g
35.0	45.0	20.0	K35-45-20	36500	49500	10.0	55 g
35.0	45.0	30.0	K35-45-30	52500	78500	10.0	80 g
35.0	45.0	49.0	K35-45-49	81500	13400	10.0	120 g
35.0	40.0	30.0	K35-40-30	31500	65500	11.0	48 g
35.0	42.0	20.0	K35-42-20	29500	48500	11.0	41 g
36.0	41.0	30.0	K36-41-30	23000	43000	11.0	52 g
36.0	42.0	16.0	K36-42-16	24000	42000	11.0	50 g
37.0	42.0	17.0	K37-42-17	21900	42500	10.0	25 g
37.0	42.0	27.0	K37-42-27	31500	67500	10.0	40 g
37.0	45.0	26.0	K37-45-26	43500	73500	10.0	60 g
38.0	43.0	17.0	K38-43-17	20000	38000	10.0	26 g

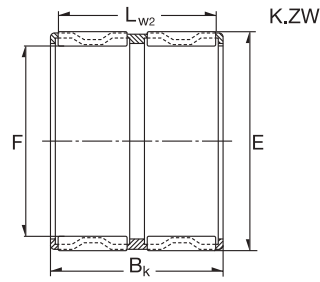
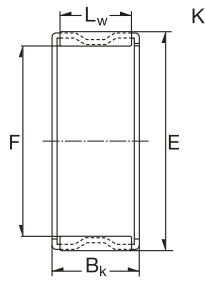
K滚针保持器架组件



9

Dimension (mm)			Designation/Type	*Basic Load Rating		*LimitingSpeed x1000rpm Oil	Mass (g) approx.
F	E	BK		C	Co		
38.0	43.0	27.0	K38-43-27	31000	67500	10.0	43 g
38.0	46.0	20.0	K38-46-20	35000	56500	10.0	46 g
38.0	46.0	32.0	K38-46-32	54500	98500	10.0	72 g
39.0	44.0	24.0	K39-44-24	28000	58500	10.0	38 g
39.0	44.0	26.0	K39-44-26	27000	55500	10.0	29 g
40.0	44.0	13.0	K40-44-13	13500	28000	10.0	20 g
40.0	45.0	13.0	K40-45-13	17100	32000	10.0	21 g
40.0	45.0	17.0	K40-45-17	20900	41000	10.0	27 g
40.0	45.0	21.0	K40-45-21	24400	49500	10.0	36 g
40.0	45.0	27.0	K40-45-27	32500	72500	10.0	46 g
40.0	46.0	17.0	K40-46-17	24500	44500	9.0	30 g
40.0	47.0	18.0	K40-47-18	29000	49500	9.0	45 g
40.0	47.0	20.0	K40-47-20	32000	56500	9.0	42 g
40.0	48.0	20.0	K40-48-20	35500	58500	9.0	57 g
40.0	45.0	30.0	K40-45-30	26000	53500	9.0	48 g
42.0	47.0	13.0	K42-47-13	17300	33000	9.0	22 g
42.0	47.0	17.0	K42-47-17	21100	42500	9.0	31 g
42.0	47.0	25.0	K42-47-25 TN	27000	57500	9.0	25 g
42.0	47.0	27.0	K42-47-27	33000	74500	9.0	46 g
42.0	48.0	35.0	K42-48-35	35000	76000	9.0	60 g
42.0	50.0	18.0	K42-50-18	31000	49500	9.0	53 g
42.0	50.0	20.0	K42-50-20	34500	56500	9.0	54 g
42.0	47.0	30.0	K42-47-30	31000	75500	9.0	54 g
43.0	48.0	17.0	K43-48-17	21000	42500	9.0	29 g
43.0	48.0	27.0	K43-48-27	33000	74500	9.0	45 g
43.0	50.0	18.0	K43-50-18	30500	53500	9.0	48 g
45.0	49.0	19.0	K45-49-19	17500	40000	8.0	27 g
45.0	50.0	17.0	K45-50-17	22000	45000	8.0	25 g
45.0	50.0	27.0	K45-50-27	34000	79500	8.0	50 g
45.0	50.0	32.0	K45-50-32 TN	38000	90500	8.0	45 g

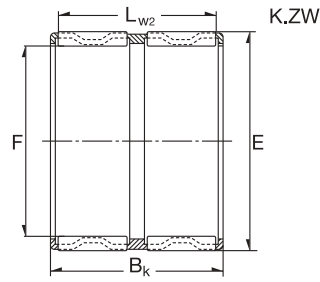
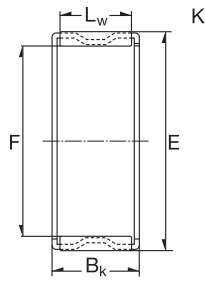
K滚针保持器架组件



10

Dimension (mm)			Designation/Type	*Basic Load Rating		*LimitingSpeed x1000rpm Oil	Mass (g) approx.
F	E	BK		C	Co		
45.0	52.0	18.0	K45-52-18	31000	56500	8.0	51 g
45.0	52.0	21.0	K45-52-21 TN	39500	57500	8.0	32 g
45.0	53.0	20.0	K45-53-20	38500	66500	8.0	62 g
45.0	53.0	21.0	K45-53-21	38000	66500	8.0	65 g
45.0	53.0	22.0	K45-53-22	42000	66500	8.0	68 g
45.0	53.0	28.0	K45-53-28	51500	97500	8.0	78 g
45.0	59.0	18.0	K45-59-18 TN	43500	53500	7.0	60 g
45.0	59.0	32.0	K45-59-32	72500	101500	7.0	145 g
45.0	59.0	36.0	K45-59-36	75500	108500	7.0	195 g
45.0	51.0	36.0	K45-51-36	44500	98500	7.0	85 g
47.0	52.0	17.0	K47-52-17	22800	48500	8.0	32 g
47.0	52.0	27.0	K47-52-27	34500	82500	8.0	50 g
47.0	53.0	25.0	K47-53-25	38000	81500	8.0	53 g
47.0	55.0	28.0	K47-55-28	52500	99500	7.5	62 g
48.0	54.0	19.0	K48-54-19	30000	60500	7.5	44 g
48.0	54.0	25.0	K48-54-25	31000	91000	7.5	55 g
50.0	55.0	13.5	K50-55-13.5	17500	36000	7.5	31 g
50.0	55.0	17.0	K50-55-17	21400	46500	7.5	35 g
50.0	55.0	20.0	K50-55-20	26000	59500	7.5	39 g
50.0	55.0	30.0	K50-55-30	38500	96500	7.5	59 g
50.0	57.0	18.0	K50-57-18	33000	62500	7.0	53 g
50.0	58.0	20.0	K50-58-20	35000	61500	7.0	64 g
50.0	58.0	25.0	K50-58-25	43500	80500	7.0	81 g
52.0	57.0	12.0	K52-57-12	17500	36000	7.0	24 g
55.0	60.0	20.0	K55-60-20	28000	65500	6.5	43 g
55.0	60.0	27.0	K55-60-27	37500	96500	6.5	60 g
55.0	60.0	30.0	K55-60-30	40500	10300	6.5	68 g
55.0	61.0	20.0	K55-61-20	41000	11000	6.5	56 g
55.0	62.0	18.0	K55-62-18	35000	68500	6.5	58 g
55.0	63.0	15.0	K55-63-15	24500	40500	6.5	53 g

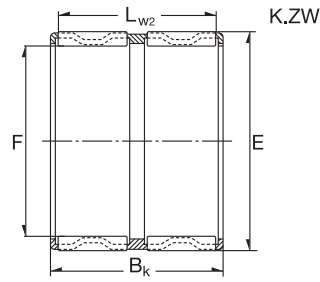
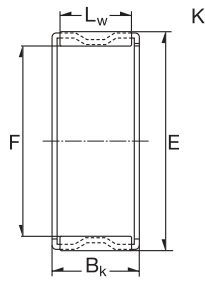
K滚针保持器架组件



11

Dimension (mm)			Designation/Type	*Basic Load Rating		*LimitingSpeed x1000rpm Oil	Mass (g) approx.
F	E	BK		C	Co		
55.0	63.0	20.0	K55-63-20	39500	79500	6.5	73 g
55.0	63.0	25.0	K55-63-25	49500	99500	6.5	88 g
55.0	63.0	32.0	K55-63-32	61500	129500	6.5	117 g
55.0	60.0	40.0	K55-60-40	48000	132000	6.5	96 g
56.0	61.0	20.0	K56-61-20	27000	64500	6.5	45 g
58.0	63.0	17.0	K58-63-17	21500	63500	6.0	42 g
58.0	64.0	19.0	K58-64-19	24500	77500	6.0	53 g
58.0	65.0	18.0	K58-65-18	34500	69500	6.0	52 g
58.0	65.0	38.0	K58-65-38	48500	106500	6.0	106 g
60.0	65.0	20.0	K60-65-20	29000	71500	6.0	50 g
60.0	65.0	30.0	K60-65-30	42000	115500	6.0	71 g
60.0	68.0	20.0	K60-68-20	43000	84500	5.5	79 g
60.0	68.0	23.0	K60-68-23	49000	100500	5.5	94 g
60.0	68.0	25.0	K60-68-25	52500	110500	5.5	97 g
60.0	68.0	27.0	K60-68-27	59000	120500	6.0	98 g
60.0	75.0	42.0	K60-75-42	11300	19200	5.5	240 g
60.0	66.0	33.0	K60-66-33	45500	111500	6.0	104 g
60.0	66.0	40.0	K60-66-40	57500	150500	5.5	116 g
60.0	68.0	30.0	K60-68-30	44000	87500	5.5	136 g
60.0	68.0	34.0	K60-68-34	47500	95500	5.5	140 g
62.0	70.0	40.0	K62-70-40	65500	145500	5.5	147 g
63.0	70.0	21.0	K63-70-21	45000	100500	5.5	75 g
64.0	70.0	16.0	K64-70-16	27500	59500	5.5	53 g
65.0	70.0	20.0	K65-70-20	30000	76500	5.5	49 g
65.0	70.0	30.0	K65-70-30	43500	123500	5.5	83 g
65.0	73.0	23.0	K65-73-23	45500	93500	5.5	100 g
65.0	73.0	30.0	K65-73-30	56500	122500	5.5	126 g
68.0	74.0	20.0	K68-74-20	35000	83500	5.5	65 g
68.0	74.0	30.0	K68-74-30	46000	117500	5.5	97 g
68.0	74.0	35.0	K68-74-35	48000	124500	5.5	116 g

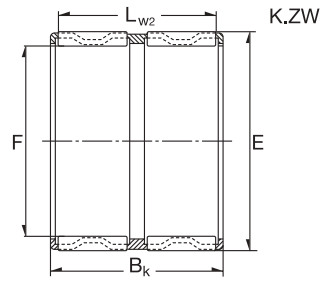
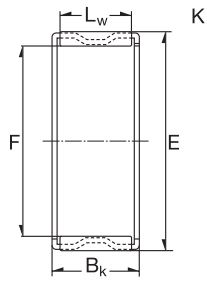
K滚针保持器架组件



12

Dimension (mm)			Designation/Type	*Basic Load Rating		*LimitingSpeed x1000rpm Oil	Mass (g) approx.
F	E	BK		C	Co		
68.0	75.0	32.0	K68-75-32	53500	127500	4.5	120 g
70.0	76.0	20.0	K70-76-20	35500	85500	4.5	70 g
70.0	76.0	30.0	K70-76-30	51500	138500	4.5	100 g
70.0	78.0	25.0	K70-78-25	51500	111500	4.5	115 g
70.0	78.0	30.0	K70-78-30	59500	134500	4.5	136 g
70.0	80.0	30.0	K70-80-30	72500	147500	4.5	150 g
70.0	78.0	46.0	K70-78-46	77500	18800	4.5	230 g
72.0	80.0	20.0	K72-80-20	41000	84500	4.5	94 g
73.0	79.0	20.0	K73-79-20	36500	99500	4.5	69 g
75.0	81.0	20.0	K75-81-20	37000	93500	4.5	72 g
75.0	81.0	30.0	K75-81-30	51500	142000	4.5	106 g
75.0	83.0	23.0	K75-83-23	49500	108000	4.0	113 g
75.0	83.0	30.0	K75-83-30	61500	142000	4.0	174 g
75.0	83.0	35.0	K75-83-35	62500	146500	4.0	165 g
75.0	83.0	40.0	K75-83-40	72500	176500	4.0	190 g
80.0	86.0	20.0	K80-86-20	38000	97500	4.0	76 g
80.0	86.0	30.0	K80-86-30	55500	158500	4.0	114 g
80.0	88.0	30.0	K80-88-30	71500	178500	4.0	141 g
80.0	88.0	40.0	K80-88-40	75500	191500	4.0	204 g
80.0	88.0	46.0	K80-88-46	87500	23000	4.0	235 g
85.0	92.0	20.0	K85-92-20	44000	107500	3.5	96 g
90.0	87.0	20.0	K90-97-20	44500	112500	3.0	103 g
90.0	98.0	27.0	K90-98-27	60500	149500	3.0	150 g
90.0	98.0	30.0	K90-98-30	67500	171500	3.0	172 g
95.0	102.0	20.0	K95-102-20	45500	122500	2.9	110 g
95.0	103.0	30.0	K95-103-30	68500	179500	2.9	177 g
95.0	103.0	40.0	K95-103-40	82500	227500	2.9	250 g
100.0	107.0	21.0	K100-107-21	47500	126500	2.7	120 g
100.0	108.0	27.0	K100-108-27	56500	142500	2.7	176 g
100.0	108.0	30.0	K100-108-30	70500	187500	2.7	190 g

K滚针保持器架组件



13

Dimension (mm)			Designation/Type	*Basic Load Rating		*LimitingSpeed x1000rpm Oil	Mass (g) approx.
F	E	BK		C	Co		
105.0	112.0	21.0	K105-112-21	47000	126500	2.5	123 g
105.0	113.0	30.0	K105-113-30	71500	196500	2.5	198 g
110.0	117.0	24.0	K110-117-24	55500	157500	2.3	146 g
110.0	118.0	30.0	K110-118-30	77500	218500	2.3	217 g

www.zen.biz

版权所有。
未经版权所有人明确许可，不得擅自复制、摘录、更改该目录册的任何部分。

v.10 / 12



Bearings for your future